

Supplementary material

Supplementary Information for the article **Navigating the drought: upstream migration of a small-sized Cypriniformes (*Telestes muticellus*) in response to drying in an intermittent mountain stream**

Journal: Knowledge and Management of Aquatic Ecosystems

e-mail: schiavon@zedat.fu-berlin.de

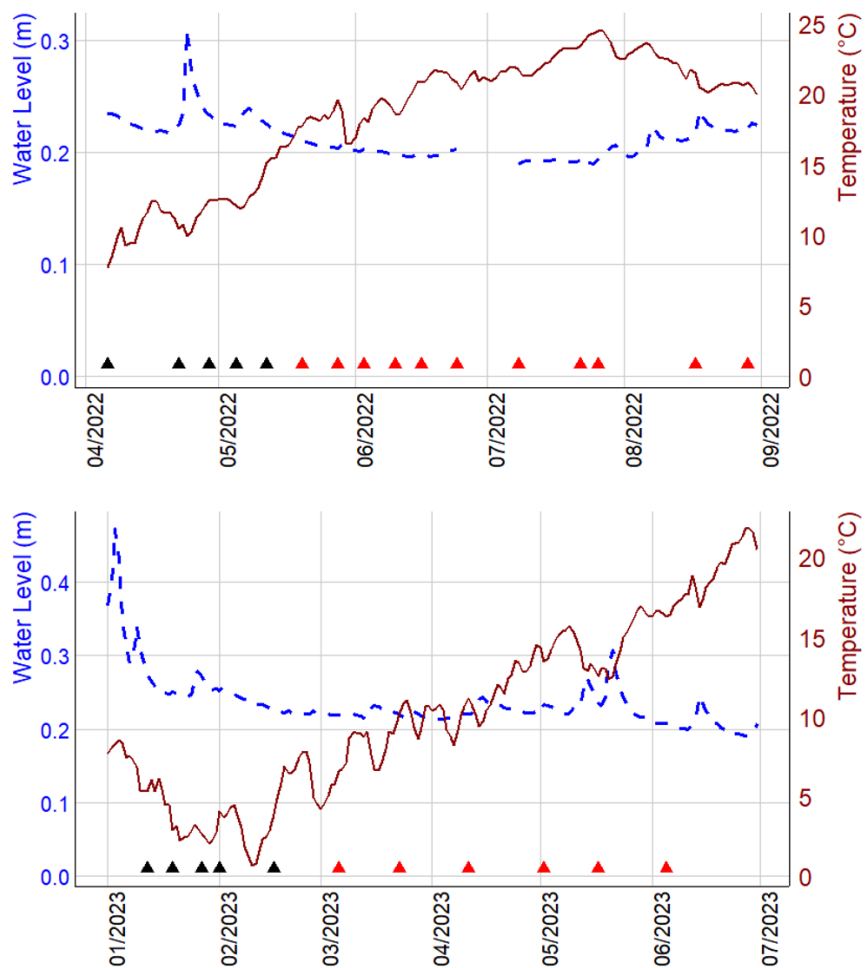


Figure S1: Temporal variations in water level (m) and temperature (°C) throughout the study periods. The water levels are illustrated by a blue dashed line, while the temperature data, are represented by a red solid line. Triangles indicate tracking events: black for observations taken before the onset of dry conditions, and red for tracking events after the onset of dry conditions. The water level-temperature sensor was positioned 140 meters upstream of the intermittent reach. Note: Water level data is unavailable from June 25 to July 6, 2022.



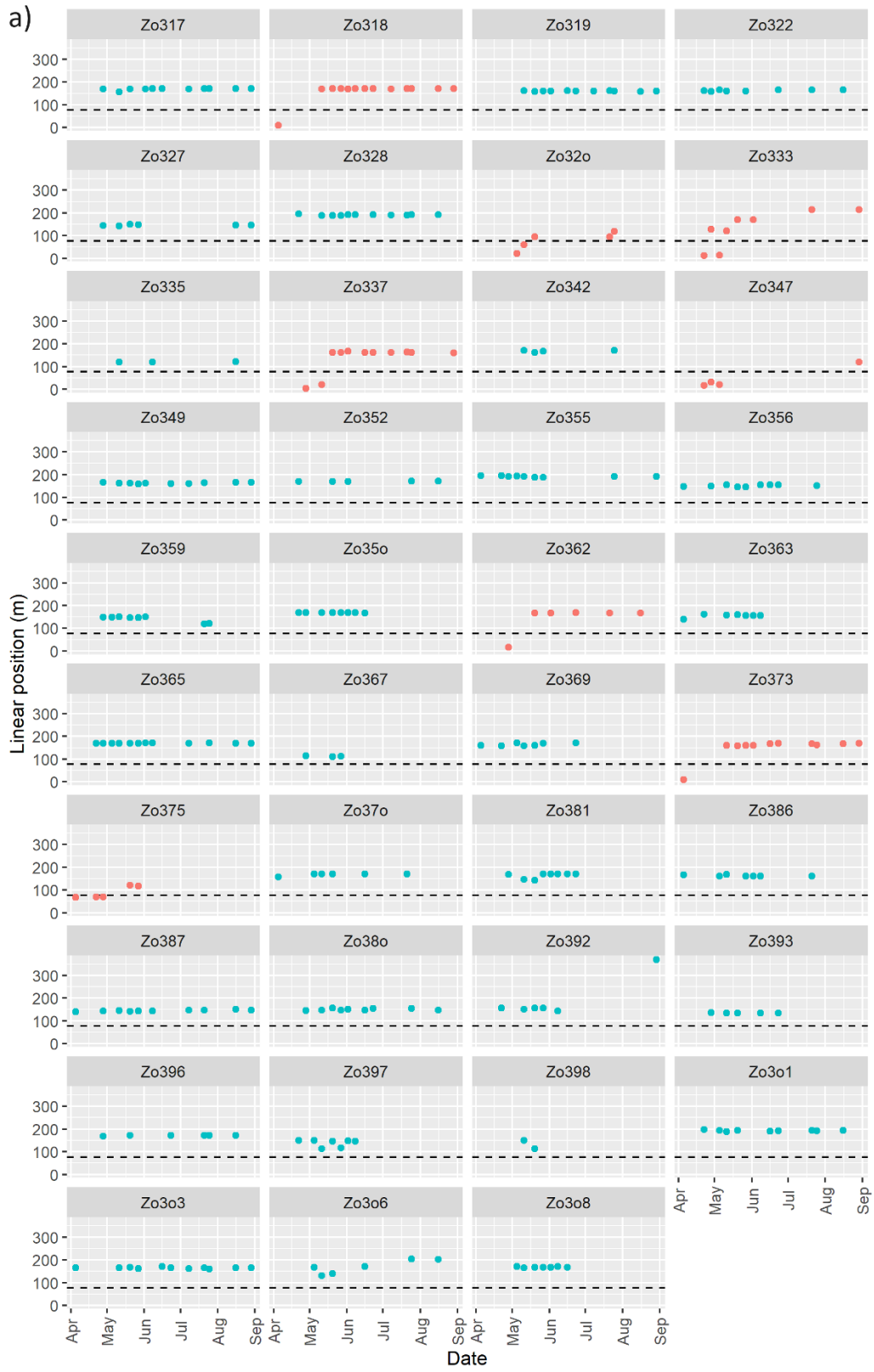


Figure S2: Longitudinal position of individual *T. muticellus* over time in the study reach for 2022 (a) and 2023 (b). The horizontal dashed line demarcates the boundary between the intermittent and perennial reaches. Blue circles for fish in the perennial reach prior to drying red points for fish that were in the intermittent reach prior to drying.