

Supplementary Information

for the article ‘Deep chlorophyll maximum in temperate lakes with different trophic conditions - a rare or common phenomenon?’ by Maciej Karpowicz, Agnieszka Pasztaleniec, Magdalena Grabowska, Anna Pietryczuk.

Journal: Knowledge and Management of Aquatic Ecosystems

e-mail: m.karpowicz@uwb.edu.pl

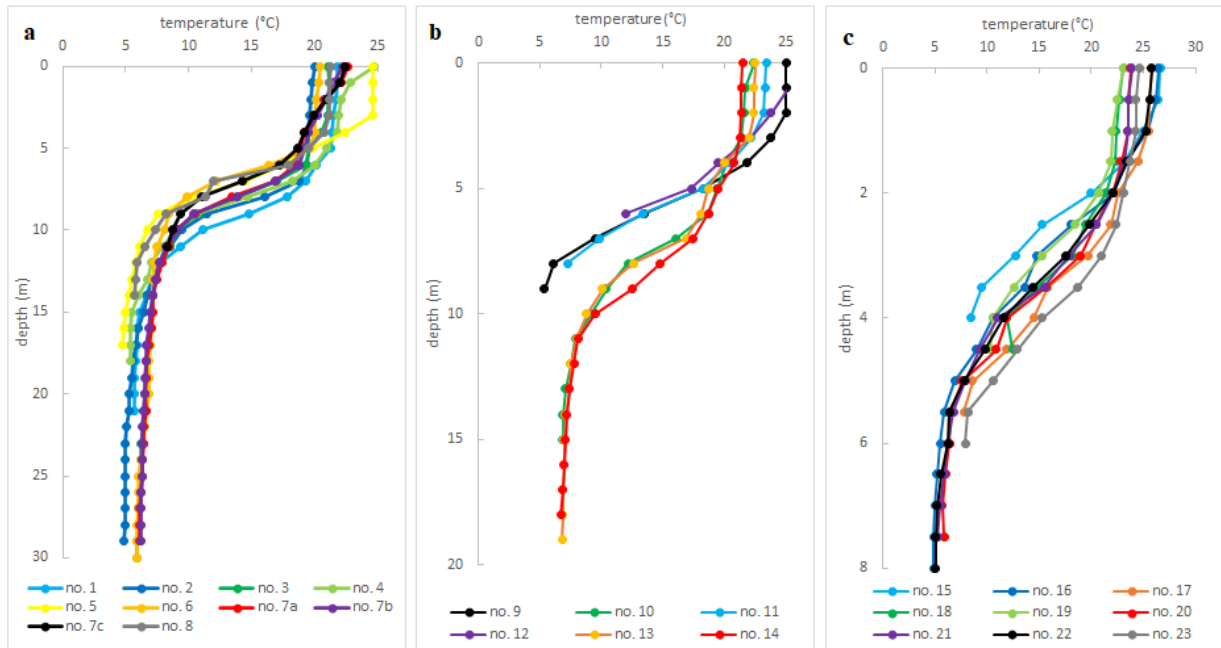


Figure S1. Vertical profiles of temperature in mesotrophic trophic lakes (a), eutrophic lakes (b), and dystrophic lakes (c).