

Supplementary material

Spatial autocorrelation of phytoplankton biomass is weak in the rivers of Lake Taihu Basin, China

Zhaoshi Wu^a, Ming Kong^b, Yamin Fan^c, Xiaolong Wang^a, Kuanyi Li^{a,d*}

^a*State Key Laboratory of Lake Science and Environment, Nanjing Institute of Geography and Limnology, Chinese Academy of Sciences, Nanjing, 210008, China*

^b*Nanjing Institute of Environmental Sciences, Ministry of Environmental Protection, Nanjing, 210042, China*

^c*Jiangsu Provincial Academy of Environmental Science, Nanjing, 210036, China*

^d*Sino-Danish College, University of Chinese Academy of Sciences, Beijing 100049, China*

Email addresses:

Zhaoshi Wu: zswu@niglas.ac.cn

Ming Kong: kongming@nies.org

Yamin Fan: fanyamin@163.net

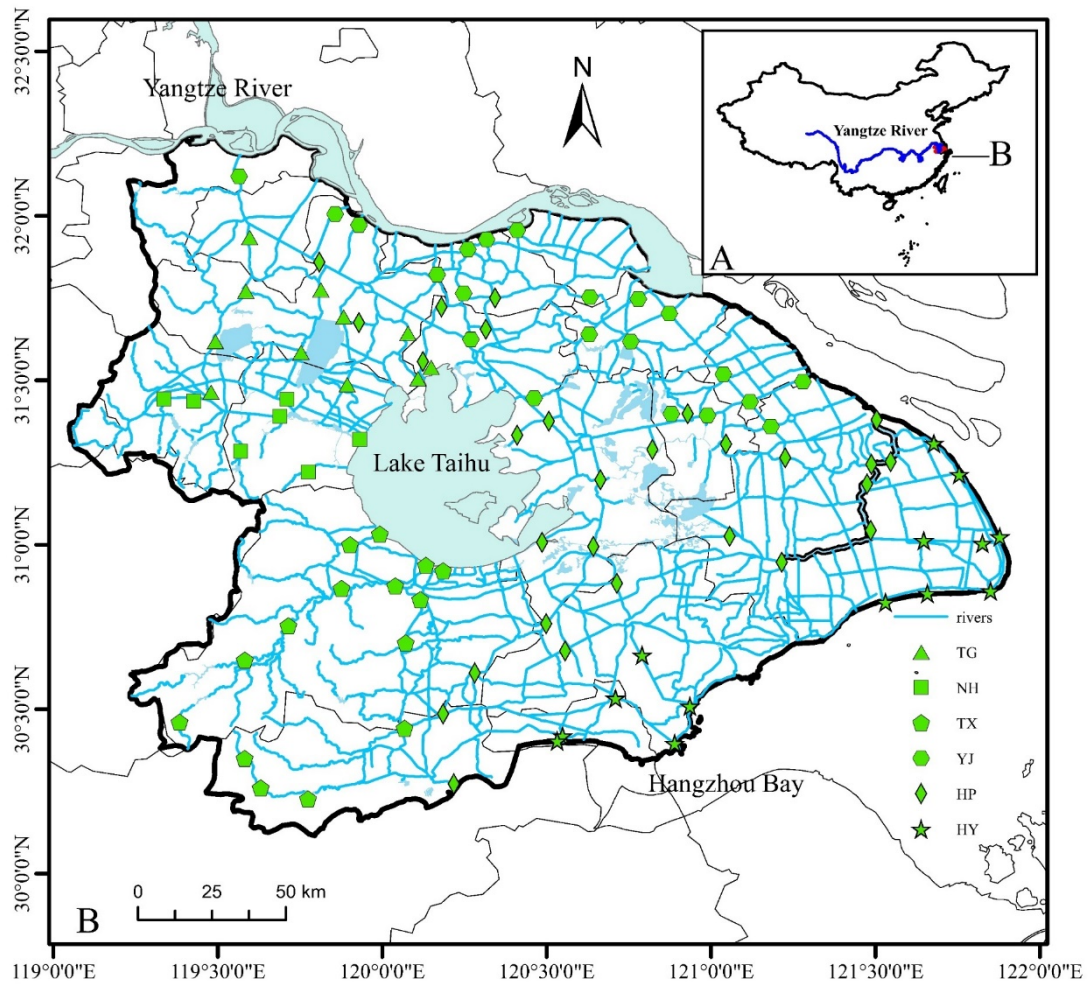
Xiaolong Wang: wangxl@niglas.ac.cn

Kuanyi Li: kyli@niglas.ac.cn

Corresponding author: Kuanyi Li

Tel.: +86 25 86882213; fax: +86 25 57714759

Fig. S1 Location of the sampling sites in Lake Taihu Basin, China (TG: Tiaoge river system; NH: Nanhe river system; TX: Tiaoxi river system; YJ: Yanjiang river system; HP: Huangpu river



system; HY: Hangzhou Bay and the Yangtze Estuary river system) (Wu et al., 2018).

Adopted from Wu et al.(2018).